



# NAMIBIA PHOTO TOUR



## INTRODUCTION:

Namibia is a vast country with a surface area of 824 268 km<sup>2</sup>, it is about four times the size of the United Kingdom and 27 times the size of Belgium. Blessed with bountiful sunshine, an abundance of wildlife and an intriguing variety of flora and fauna. Attributes that make it a country to which visitors return again and again are the friendliness and cultural diversity of its people, and above all, the pristine quality and extraordinary beauty of its landscape. The country derives its name from the Namib Desert, a unique geological feature renowned for the unusual and haunting quality of its landscape. Far from being lifeless and barren, this narrow strip of moist coastal desert features an unusual variety of desert-adapted flora and fauna. The country can be divided into four distinct topographical regions. Of these the most definitive is possibly the Namib Desert, which consists of a 50 km – 140 km wide coastal plain extending along the entire coastline, interspersed with dune belts, dry riverbeds and deeply eroded canyons. The central plateau, which runs from north to south, has an average altitude of between 1,000 m and 2,000 m. This plateau gradually falls away towards the east, where a sandy strip of land merges into the level expanse of the Kalahari Desert. Dense, bush covered plains to the north-east of the Etosha Pan included the high-rainfall areas of Kavango and Caprivi, typified by woodland savannah and riverine vegetation. With a dry climate, typical of a semi-desert country, droughts are a regular occurrence. Average day temperatures in the summer vary from 20°C - 34°C and average night temperatures in the winter from 0°C - 10°C. The Benguela Current is also the prime determinant of the climate of the Namib, as it reduces rainfall and causes the omnipresent fog typical of the coast.

## INCLUDED IN PACKAGE:

<i>Destinations:</i>	<i>Windhoek, Luderitz, Sossusvlei, Swakopmund, Damaraland, Etosha National Park &amp; Erindi Game Reserve</i>
<i>Dates:</i>	<i>August 28 to September 14, 2013</i>
<i>Duration:</i>	<i>18 Days / 17 Nights</i>
<i>Accommodation:</i>	<i>En-suite accommodation at the following: River Crossing Lodge, Luderitz Nest Hotel, Sossus Dune Lodge, Beach Hotel, Camp Kipwe, Grootberg Lodge, Dolomite Camp, Okaukuejo Resort &amp; Old Trader's Lodge</i>
<i>Transfers:</i>	<i>1 x air transfer from Windhoek to Luderitz</i>
<i>Meals:</i>	<i>Meals as stipulated</i>
<i>Guides:</i>	<i>1 x SafariWise guide (extra guide from day 9 to day 14)</i>
<i>Vehicles:</i>	<i>1 x Toyota land cruiser vehicles with pop-top roof (extra vehicle from day 9 to day 14)</i>

## EXCLUDED FROM PACKAGE:

<i>Flights:</i>	<i>All International flights</i>
<i>Activities:</i>	<i>All optional activities listed in itinerary</i>
<i>Personal:</i>	<i>Gratuities, Travel insurance, Laundry &amp; beverages</i>
<i>Other Items:</i>	<i>Items not specified or listed</i>



## TOUR PROGRAMME

### Day 1:

#### Hosea Kutako International Airport – River Crossing

Upon arrival at Hosea Kutako International Airport you will be transferred to River Crossing.

River Crossing Lodge is situated just east of Namibia's capital city Windhoek, nestled amongst the foothills of the Auas Mountains. This location makes it an ideal first or final destination on any visit to Namibia, especially if your onward journey departs from the main international airport. The German architecture at River Crossing Lodge resembles a farm style of yesteryear, complete with corrugated roofs, wide balconies decorated with impressive pots of geraniums, all on an unspoiled game estate. Entrance through the main lodge area is through a set of impressive double doors that lead straight to the bar, overlooking the swimming pool. The large dining room leads out onto a deck, where dramatic views of Windhoek, the mountains and surrounding game farm abound. This is just the venue for a sundowner and a snack as the beautiful Namibian sun sets.

<i>Accommodation:</i>	<i>River Crossing</i>
<i>Meals:</i>	<i>Dinner</i>
<i>Included activities:</i>	<i>Photo opportunities in and around Windhoek</i>
<i>Optional activities:</i>	<i>N.A.</i>

### Day 2:

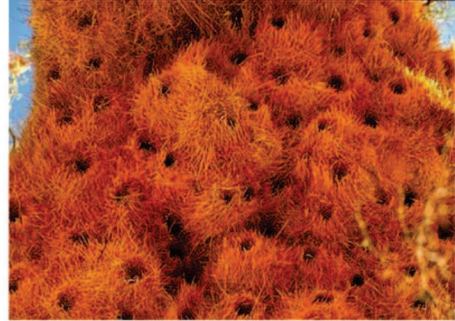
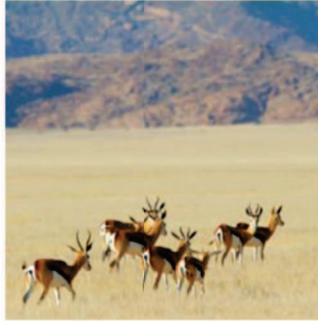
#### River Crossing – Lüderitz Nest Hotel

After breakfast you will be air transferred to Lüderitz where your Safariwise guide will meet you. You arrive at the seaside town of Lüderitz. The town was founded in 1883 when Heinrich Vogelsang purchased Angra Pequena and some of the surrounding land on behalf of Adolf Lüderitz, a *Hanseat* from Bremen in Germany, from the local Nama chief. Lüderitz began its life as a trading post, with other activities in fishing and guano-harvesting. In 1909, after the discovery of diamonds nearby, Lüderitz enjoyed a sudden surge of prosperity. Today, however, diamonds are mostly found elsewhere and offshore, and Lüderitz has lost a lot of this interest.

The harbour has a very shallow rock bottom, making it unusable for modern ships; this led to Walvis Bay becoming the centre of the Namibian shipping industry. Recently, however, the addition of a new quay has allowed larger fishing vessels to dock at Lüderitz. The town has also re-styled itself in an attempt to lure tourists to the area, which includes a new waterfront area for shops and offices.

The town is known for its colonial architecture, including some Art Nouveau work, and for wildlife including seals, penguins, flamingos and ostriches. It is also home to a museum and to the Lüderitz Speed Challenge, and formerly lay at the end of a railway line to Keetmanshoop.

<i>Accommodation:</i>	<i>Luderitz Nest Hotel</i>
<i>Meals:</i>	<i>Breakfast, lunch &amp; dinner</i>
<i>Included activities:</i>	<i>Air transfer to Luderitz</i>
<i>Optional activities:</i>	<i>N.A.</i>



Day 3:

Luderitz Nest Hotel

Today we explore the amazing ghost town of Kolmanskop. The buildings of this derelict diamond mining town are slowly being engulfed by the relentless shifting coastal sands. Images created here impart an eerie quality of absolute ruin, yet are simultaneously graphically compelling, sensuous and downright intriguing. With special permits we photograph here through sunset.

Kolmanskop was named after a transport driver named Johnny Coleman who, during a sand storm, abandoned his ox wagon on a small incline opposite the settlement. Once a small but very rich mining village, it is now a popular tourist destination run by the joint firm NamDeb (Namibia-De Beers). In 1908 the black worker Zacharias Lewala found a diamond while working in this area and showed it to his supervisor, the German railroad inspector August Stauch. After realizing that this area is rich of diamonds, lots of German miners settled in this area and soon after the German government declared a large area as a "*Sperrgebiet*", starting to exploit the diamond field.

Driven by the enormous wealth of the first diamond miners, the residents built the village in the architectural style of a German town, with amenities and institutions including a hospital, ballroom, power station, school, skittle-alley, theater and sport-hall, casino, ice factory and the first x-ray-station in the southern hemisphere, as well as the first tram in Africa. It had a railway link to Lüderitz. The town declined after World War I when the diamond-field slowly exhausted and was ultimately abandoned in 1954. The geological forces of the desert mean that tourists now walk through houses knee-deep in sand. Kolmanskop is popular with photographers for its settings of the desert sands' reclaiming this once-thriving town.

- Accommodation:* *Luderitz Nest Hotel*
- Meals:* *Breakfast, lunch & dinner*
- Included activities:* *Ghost town excursion*
- Optional activities:* *N.A.*

Day 4:

Luderitz Nest Hotel – Sossus Dune Lodge

After breakfast this morning we depart and follow a northward route that traces the edge of the Namib-Naukluft National Park. Our next destination is Sossusvlei Dune Lodge. Sossusvlei is situated amidst the Namib Desert at the entrance to the famous Sossusvlei. Sossusvlei means 'the gathering place of water' in the local Nama language. In good years, seasonal rains in the foothills of the Naukluft and Tsaris Mountains succeed in reaching the vlei, creating temporary lakes that mirror the sand dunes surrounding them. It is a clay pan - set amid huge piles of sand known as star dunes and is fed by the ephemeral Tsauchab River. The high, red sand dunes which surround Sossusvlei form part of the sand sea, which stretches from just north of Luderitz to the Kuiseb River. Some of these dunes reach as high as 220m.

The Vegetation, such as the camelthorn tree, is watered by infrequent floods of the Tsauchab River, which slowly soak into the underlying clay. Sossusvlei is one of 4 clay pans in the area, the others being The Dead Vlei, Hidden Vlei and Nara Vlei. Following lunch at our lodge, we shoot the spectacular red sand dunes at Sossusvlei through sunset.

- Accommodation:* *Sossus Dune Lodge*
- Meals:* *Breakfast, lunch & dinner*
- Included activities:* *Scenic drive to Sossusvlei*
- Optional activities:* *N.A.*





## Day 5 & 6:

### Sossus Dune Lodge

Two full shooting days provide plenty of time to explore the Sossusvlei area with our cameras. We are out before sunrise, back after sunset with time for a midday rest or to download at our lodge oasis.

We hike into the famous salt/clay pan called Dead Vlei. A Strange and alien landscape. Here, long-dead camel thorn trees create a graphic foreground to the rolling dunes behind them. Found among towering red dunes is an area known as Sossusvlei.

The dunes that surround the area are rich red and owe their red colour to age, as over the thousands of years, the sand has literally rusted. Sossusvlei itself is a salt/clay pan, a wide, flat, salt-covered expanse with a dense and compact layer of clay in the subsoil, when dry, Sossusvlei is hard and arid, when wet, as it does every 5-10 years when fed by the Tsauchab River, it becomes sticky and plastic. For the Tsauchab River the area is its final destination, and even in the wettest of years the river is simply soaked away into the salt/clay pan, giving the area the nickname as the "place of no return." Altogether the blue sky, red dunes and white pans make a striking vision, one you may have seen in the movies such as *The Fall*, *The Cell*, and *Steel Dawn*. Nearby is yet another "place of no return" this one even older, and much deader than Sossusvlei. Known as Dead Vlei or "dead marsh" (Vlei being the Afrikaans for a type of marsh) it is found among the tallest dunes in the world, reaching some 400 meters or 1,312 feet high taller than the Empire State Building. The tallest of the dunes has its own nickname: "Big Daddy." Dead Vlei was once like Sossusvlei, with the river draining into it and nourishing desert life and even trees, but no longer. Some 900 years ago the climate dried up, and dunes cut off Dead Vlei from the river. It became so dry in Dead Vlei that not only did the trees die, but it became too dry for the trees to even decompose, and they simply scorched black in the sun and became monuments to their own destruction. The trees, now over a 1000 years old (it is believed they were living for some 200 years before the climate shifted again), form a barren forest of ancient dead trees, frozen much as they were some 900 years ago. Don't let the area fool you however, as it is not entirely without life. *Salsola* and clumps of 'Nara' stay alive by subsisting off of morning mists. It is a long 70 km drive from the park gates to the dunes of Sossusvlei and Dead Vlei. One of the many reasons to go is to experience the sun rise (or sun set) over the huge red sand dunes of the Namib desert. The skies which are among the clearest on the planet provide striking visions of sunset, sunrise and the stars.

<i>Accommodation:</i>	<i>Sossus Dune Lodge</i>
<i>Meals:</i>	<i>Breakfast, lunch &amp; dinner</i>
<i>Included activities:</i>	<i>Sossusvlei &amp; Dead Vlei excursion</i>
<i>Optional activities:</i>	<i>N.A.</i>

## Day 7:

### Sossus Dune Lodge – Beach Hotel

The hotel is located only 50m from the Atlantic Ocean and within walking distance to the center of Swakopmund. The combination of modern architectural styles with glass fronts and classic furnishings are exceptional, and a guarantee for a pleasant stay. All 20 comfort-rooms, the 5 family units, the 3 comfort apartments and the 5 luxury apartments have a balcony with a breathtaking view on the Atlantic Ocean.

The rooms/apartments on the southern side of the hotel have also views of the dunes of the Namib Desert. In addition to a fully glazed lounge we have a roof terrace with swimming pool and a amazing 360 degree view over the city, the dunes and the sea. For our guests we offer a free shuttle service with a electric motorized rickshaw.



*Accommodation:* *Beach Hotel*  
*Meals:* *Breakfast, lunch*  
*Included activities:* *Scenic drive along the skeleton coast to Swakopmund*  
*Optional activities:* *Shopping and sightseeing in Swakopmund*

#### Day 8:

##### Beach Hotel

Today we head out on a private living desert tour. It is a unique 4x4-adventure drive through the dunes outside Swakopmund, Namibia. Just the drive in the dunes is an amazing experience, but the guide will show us a lot more than sand. The tour takes us from the vegetated, life-rich eastern side of the dunes, right through the dunes to the Atlantic Ocean on the western side of the dune belt. Tommy introduces us to some of the fascinating, hidden life in this apparently barren landscape that is part of the Namib Desert. Here we can find creatures endemic to the Namib: the sidewinder (Peringuey's Adder), the Palmato Gecko with its transparent skin and beautiful colours - we dig into the dune side to find this nocturnal desert-dweller. We track the large Namaqua Chameleon, and watch it enjoy brunch. Then it is a dash to catch the swift sand-diving lizard. We find out how the area's plants and small animals survive the harsh climate, and how they obtain water for life. We also track a FitzSimon's Burrowing Skink across the dune face, in hopes of catching this legless lizard. Along the way Tommy will explain the variety of dune colours. At the end of the tour, weather permitting, we experience a 'roaring' dune. Other characters to be found in the dune belt are the 'dancing' White Lady Spider; the Parabuthus Villosus black scorpion; the occasional horned adder or sand-snake; desert wasps, fish-moths, crickets and several beetle species, and many more. A Living Desert Tour is educational, fun and an unforgettable experience. We see the desert and dunes with new eyes. The photographic opportunities are endless too: make sure those batteries are charged before we leave!

*Accommodation:* *Beach Hotel*  
*Meals:* *Breakfast*  
*Included activities:* *Living Desert Tour (private tour)*  
*Optional activities:* *N.A.*

#### Day 9 & 10:

##### Beach Hotel - Camp Kipwe

Today's journey takes us north to Damaraland, an area renowned for its geology, unusual rock formations, rock paintings, and rare desert-adapted flora and fauna. Accommodation will be at Camp Kipwe, situated within the Twyfelfontein Conservancy. The mountain views from here are breathtaking, as are the stunning sunsets. Eight igloo-shaped bungalows allow a maximum of only 16 guests at a time, emphasizing the peace and quiet of the camp. Outside each bungalow is an en-suite bathroom with a shower, as well as a private veranda overlooking the surrounding plains. Explore the surrounding area with your guide, in search of some of Namibia's remaining 600 desert dwelling elephant. Your guide will also conduct an excursion to the Twyfelfontein rock engravings, a rocky site containing around 2,000 rock carvings and a UNESCO World Heritage Site. It is one of the largest and most important concentrations of rock art in Africa, and was proclaimed a National Monument in 1952.

Two other well-known geological feature close to Twyfelfontein which you can visit are the Organ Pipes and the Burnt Mountain. The Organ Pipes are a distinctive series of dolerite pillars that have been exposed by erosion and can be viewed in the small gorge on the left hand side of the road leading to the Burnt Mountain. The Burnt Mountain is a flat-topped mountain which derives its name from the piles of blackened limestone at its base. You



may also choose to visit the Petrified Forest - some 200 million years ago trees were uprooted and swept along by rivers in flood, then covered by sediments and subsequently uncovered by erosion.

*Accommodation:* Camp Kipwe  
*Meals:* Breakfast, lunch & dinner  
*Included activities:* Twyfelfontein rock paintings, organ pipes & burnt mountain excursion, search for the Desert adapted elephant, Petrified Forest  
*Optional activities:* N.A

Day 11:  
Camp Kipwe - Grootberg Lodge

After breakfast at Camp Kipwe we travel to Grootberg Lodge.

Perched on the rim of the Grootberg Plateau, the Grootberg Lodge stands sentinel over the Klip River Valley. 12 000 hectares have been set aside by the Khoadi / Hoas community for conservation and tourism, and it is through this pristine wilderness that you meander either on foot or by vehicle to encounter the inhabitants of this remote biosphere. Grootberg Lodge is a landmark in Namibia's tourism industry as it is the first middle-market establishment in the country that is 100% owned by the conservancy. The European Union funded the project, through the Ministry of Environment and Tourism's Development Programme, and the private sector supplies the training and management skills, until the community becomes self-sustainable. The local community benefits greatly, thanks to the revenues generated by the Lodge. Grootberg Lodge offers personal service, delectable food and professional guides in stunning surroundings. The main thatched lodge has a restaurant, lounge and bar, and there is a swimming pool near by. A set menu is available for all meals. The lodge has 12 rock and thatch chalets, all with a wonderful view over the gorge, where Black Eagles hunt just below the level of your private deck. Desert elephant, black rhino and lion are some of the more impressive mammals to be found, but you will also find a myriad of smaller mammals, birds, reptiles, insects and plants. Guests can take advantage of rhino and elephant tracking trips in the valley, or morning and afternoon scenic drives on the plateau.

*Accommodation:* Grootberg Lodge  
*Meals:* Breakfast, lunch & dinner  
*Included activities:* Scenic Drive to Grootberg Lodge  
*Optional activities:* Guided walks, Elephant or Rhino tracking, Scenic drives, Horse riding

Day 12:  
Grootberg Lodge - Dolomite Camp

En route to Dolomite Camp we visit the Himba village, one of the last most traditional people of Namibia in a small settlement near Palmfontein surrounded by makalani palms and dry river beds. These friendly people, closely related to the Herero, are herdsmen, breeding mainly cattle and goats while leading a semi-nomadic life. Learn how the proud Himba women spend many hours on beauty care and clean themselves with herbal steam baths. See their homesteads, cone shaped structures made from palm leaves, mud and cattle dung.

Afterwards you will travel to Etosha National Park, entering at Galton Gate. Proceed to Dolomite Camp, located in western Etosha National Park near the Dolomietpunt waterhole. It is the first camp to be built on this side of Etosha, opening up a territory previously not accessible to mainstream tourists.



This western section measures approximately one-third of the total area of Etosha Park itself. Although the main wildlife spectacles occur in and around the waterholes and vegetation of the Etosha Pan, game viewing is also very good in this area. Some of the highest concentrations of wildlife in Etosha roam freely here, including Hartmann's zebra which does not occur in the eastern section. The camp is set amongst dolomite formations, ensuring game drives are conducted in one of the park's most scenic locations. The dolomite hill, the setting of the camp, boasts hundreds of seasonally blooming plant species, a lure for botanists and photographers alike. There are no fewer than 15 waterholes in the vicinity of Dolomite Camp. The hilly and rocky terrain here also becomes a sustain extraordinary numbers of wildlife. The park is home to 114 mammals and some 340 bird species. It houses large numbers of globally endangered or threatened species, most notably black rhinoceros and African elephant. Because of its size, the park serves as a genetic reserve for various species of animals and plants.

The camp's interior blends and harmonizes with the immediate environment. Facilities include a reception, guest lounge, fireside boma, laundry service, swimming pool and secure parking. A walkway from the bar and restaurant area leads to the accommodation. There are 20 east and west facing elevated thatched en-suite chalets, nestled amongst dolomite rocky outcrops. Privacy and dramatic panoramic landscape views are guaranteed. Large herds of zebra, giraffe and antelope wander the plains around Dolomite Camp. Black and white rhino are present in numbers, often at Klip-pan waterhole. Previously endangered species such as the black rhino and black-faced impala have been successfully bred here. Wildlife excursions are conducted by professional and knowledgeable tour guides. Apart from the normal Etosha game viewing a special attraction of the Otjiovasondo area is the opportunity to see both the Plains Zebra and the Mountain Zebra drinking or grazing side by side and spotting the rare Sable Antelope

*Accommodation: Dolomite Camp*  
*Meals: Breakfast, lunch & dinner*  
*Included activities: Himba Village & Game drives while in Etosha (with your guide and vehicle)*  
*Optional activities: Night game drives NWR guides*

Day 13:  
Dolomite Camp

We will be spending the day doing game drives on the western side of Etosha.

*Accommodation: Dolomite Camp*  
*Meals: Breakfast, lunch & dinner*  
*Included activities: Game drives*  
*Optional activities: Night game drives NWR guides*

Day 14:  
Dolomite Camp - Okaukuejo Resort

Travel east to Okaukuejo Resort, located in central Etosha National Park. When it was originally proclaimed at the turn of the century the Etosha Park consisted of an area of 100,000 square kilometers. This was the largest reserve on earth but in the 1960's political pressure resulted in the Park being reduced to its current size. Etosha, meaning "Great White Place", is dominated by a massive mineral pan. The pan is part of the Kalahari Basin, the floor of which was formed around 1000 million years ago. The Etosha Pan covers around 25% of the National Park and was originally a lake fed by the Kunene River.

However the course of the river changed thousands of years ago and the lake dried up. The pan now is a large dusty depression of salt and dusty clay which fills only if the rains are heavy, and even then only holds water for a short



time. This temporary water in the Etosha Pan attracts thousands of wading birds including impressive flocks of flamingos.

The perennial springs along the edges of the Etosha Pan draw large concentrations of wildlife and birds. Etosha Pan is surrounded by sweetveld Savanna plains, which Okaukuejo, located 17 km from the Southern entrance of the park, was the first tourist camp to open in Etosha. Okaukuejo is famous for its flood-lit waterhole, where visitors can observe at close quarters a spectacle of wildlife congregating and interacting. Okaukuejo is the main administrative centre and headquarters of the Etosha Ecological Institute, where research and nature conservation management in Etosha are conducted.

*Accommodation:* Okaukuejo Resort - Waterhole Chalet  
*Meals:* Breakfast, lunch & dinner  
*Included activities:* Game drives with your guide & vehicle; game viewing at floodlit waterhole  
*Optional activities:* Night Drives with NWR guides

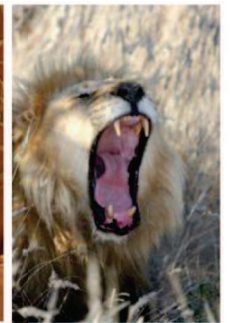
Day 15:  
Okaukuejo Resort

Etosha is the third largest National Park in the world and we have three days to explore it. From our base at Okaukuejo we will travel through the park's south-western region. Numerous water holes give rise to a wealth of wildlife images, including a fantastic white clay elephant wallow. Immense bull elephants roll in this gooey white clay to emerge from the wallow as the famous "ghost elephants" of Etosha. When it was originally proclaimed at the turn of the century the Etosha Park consisted of an area of 100,000 square kilometers. This was the largest reserve on earth but in the 1960's political pressure resulted in the Park being reduced to its current size Etosha, meaning "Great White Place", is dominated by a massive mineral pan. The pan is part of the Kalahari Basin, the floor of which was formed around 1000 million years ago. The Etosha Pan covers around 25% of the National Park. The pan was originally a lake fed by the Kunene River. However the course of the river changed thousands of years ago and the lake dried up. The pan now is a large dusty depression of salt and dusty clay which fills only if the rains are heavy and even then only holds water for a short time. This temporary water in the Etosha Pan attracts thousands of wading birds including impressive flocks of flamingos. The perennial springs along the edges of the Etosha Pan draw large concentrations of wildlife and birds. Etosha Pan is surrounded by sweetveld Savanna plains, which sustain extraordinary numbers of wildlife. Etosha is home to 114 mammals and some 340 bird species. It houses large numbers of globally endangered or threatened species, most notably black rhinoceros and African elephant. Because of its size, the park serves as a genetic reserve for various species of animals and plants.

*Accommodation:* Okaukuejo Resort - Waterhole Chalet  
*Meals:* Breakfast, lunch & dinner  
*Included activities:* Game drives in the park  
*Optional activities:* Waterhole game viewing

Day 16:  
Okaukuejo Resort – Old Traders Lodge (Erindi Game Reserve)

After our stay at Okaukuejo we travel to Erindi Game Reserve. Namibia has its fascinating desert, its own canyon, the Etosha pan and endless savannah, but on a vast mountainous plain lie Erindi, translated as "The Place of Water" in local Herero, with more than 15 000 head of game teeming over an unbelievably large game reserve, where even rare and endangered species are being conserved and managed in a manner that allows man to experience what it was once like to live in undisturbed Africa.



The experience is set on 71 000 ha of pristine wilderness with varied landscapes in a malaria-free area, from mountains to savannah to open grassland right in the heart of Namibia: Erindi Private Game Reserve is situated in the triangle between Okahandja, Otjiwarongo and Omaruru. The pure tranquillity, abundant wildlife and distant horizons with awesome sunsets will sweep us off our feet. Old Traders Lodge provides the accommodation at Erindi Private Game Reserve. This impressive lodge comprises the main dining room and viewing deck as well as 35 well appointed suites including 5 deluxe suites. Three of the five deluxe suites face the water hole.

The spacious suites include; comfortable double or twin single beds with crisp linen and warm blankets, remote controlled air-conditioning, en-suite bathroom with bath and shower, in-room safe, in-room study desk, satellite TV, hairdryers, fridges and kettles.

*Accommodation:* Old Traders Lodge  
*Meals:* Breakfast, picnic lunch & dinner  
*Included activities:* Afternoon game drive - A short excursion takes a sundowner location. Intense golden hues make the evening surreal as we sip drinks and enjoy light snacks. The light softens after a magnificent sunset, as the sun dips behind the horizon, the air cools, day transforms to night. Animals leave the safety of their daytime shelters. The numerous nocturnal hunters, including lion and genet pick up scent trailing the night air. Evening excursion also bring incredible viewing of little creatures such as striped polecat, African wild cat, bat eared foxes, porcupine and pangolin, brown hyena, spotted hyena and jackal.  
*Optional activities:* N.A.

Day 17:  
Old Traders Lodge (Erindi Game Reserve)  
 Erindi is home to over 20000 animals. From the smallest insect to the largest land mammals and a multitude of rare and endangered species.

*Accommodation:* Old Traders Lodge  
*Meals:* Breakfast, lunch & dinner  
*Included activities:* Scheduled activities  
*Optional activities:* N.A.

Day 18:  
Erindi – Hosea Kutako International Airport  
 A very early game drive; after breakfast this morning we will be transferred to Windhoek in time for your respective flights home.

*Accommodation:* N.A.  
*Meals:* Breakfast  
*Included activities:* morning game drive  
*Optional activities:* N.A.

\*\*\*\*\*